



**We will use  
Mentimeter**  
*(an interactive tool)*  
**during this session**

With your  
mobile device,  
scan the QR code  
or visit **menti.com**  
and enter code  
**37 14 85 2** to join

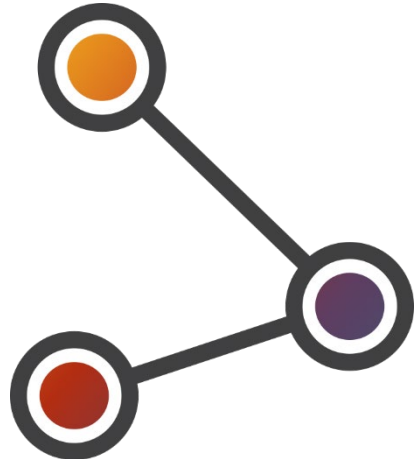
# You're Already Making a Difference

How to Amplify Your Role  
in Adapting to Climate Change  
to Advance Health Equity

HOT ISSUES  
IN HEALTH  
#HIHC23

- **Karam Ahmad**, Director, CHI (facilitator)
- **Emily Santich**, Policy Analyst, CHI (facilitator)
- **Lisa Romero**, Senior Community Health Specialist, Kaiser Permanente Colorado
- **Guadalupe Solís**, Director of Environmental Justice, Cultivando

# Overview



**Connect the Dots  
on Climate Change  
and Your Work**

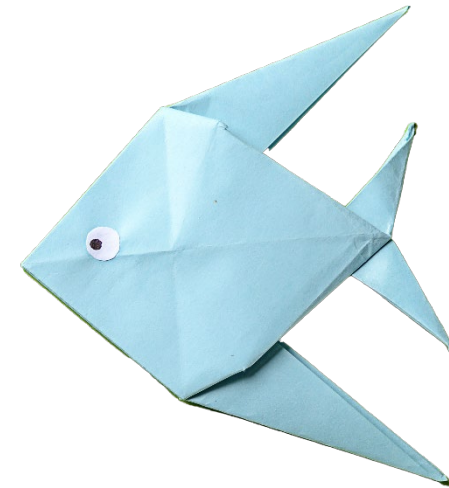


**KAISER PERMANENTE®**



**CULTIVANDO**  
Liderazgo • Abogacía • Colaboración

**Hear From a Health System  
and Community Organization**



**Fishbowl  
Activity**

**HOT ISSUES  
IN HEALTH**  
#HIHC23

# Key Takeaways



Climate change is impacting Coloradans' health today, and they do not feel prepared



Climate resilience and social factors that influence health go hand in hand



Everyone in this room has a role to play in elevating climate resilience



An aerial photograph of a suburban neighborhood during sunset. The sun is low on the horizon, casting a warm, golden glow over the scene. The houses are densely packed, with many trees interspersed among them. A large, semi-transparent circular graphic is overlaid on the right side of the image, containing text. The text is in a bold, black, sans-serif font. The overall mood is serene and peaceful.

**Nearly  
2 million**

**Coloradans believe  
climate change  
is impacting  
their health**





**39.4%**

Respiratory illness or problem breathing



**19.8%**

Mental health or substance use issues



**7.9%**

Some other health concerns



**7.5%**

Worsening of chronic illness



**6.8%**

Wildfire injuries



**5.8%**

Heat illness, heat stress, or heat stroke



**2.8%**

Loss of housing, property, or income



**2.4%**

Water contamination or scarcity of drinking water





An aerial photograph of a suburban neighborhood during sunset. The sun is low on the horizon, casting a warm orange glow over the scene. The houses are mostly two-story structures with dark roofs, surrounded by green trees. Two large, semi-transparent circular callouts are overlaid on the image. The left callout contains the text '18% believe their community is well prepared or very well prepared'. The right callout contains the text 'Nearly 2 million Coloradans believe climate change is impacting their health'.

**18%**

**believe their  
community  
is well prepared  
or very well  
prepared**

**Nearly  
2 million**

**Coloradans believe  
climate change  
is impacting  
their health**





**Climate Change Is a  
Health Equity Issue**





With your mobile device,  
scan the QR code  
or visit **menti.com**  
and enter code

**37 14 85 2** to join

# Select up to three areas you or your organization works in:



[Login to edit this Menti](#)



# Social Factors That Influence Health Are Protective Factors Against Climate Change



**Climate Resilience**

# How a Health System Embraced Climate Work



KAISER PERMANENTE®

## Advancing Climate Resilience for Community Health

Recommendations and Opportunities for Health Care Systems and Philanthropic Organizations

JUNE 2023

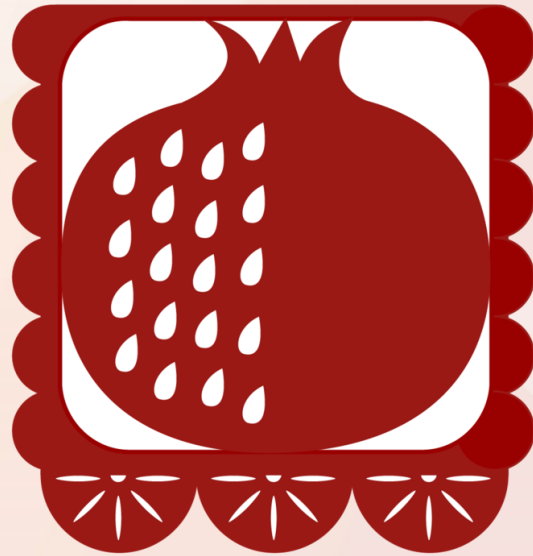


 KAISER PERMANENTE®

 COLORADO HEALTH INSTITUTE  
Informing Strategy. Advancing Health.

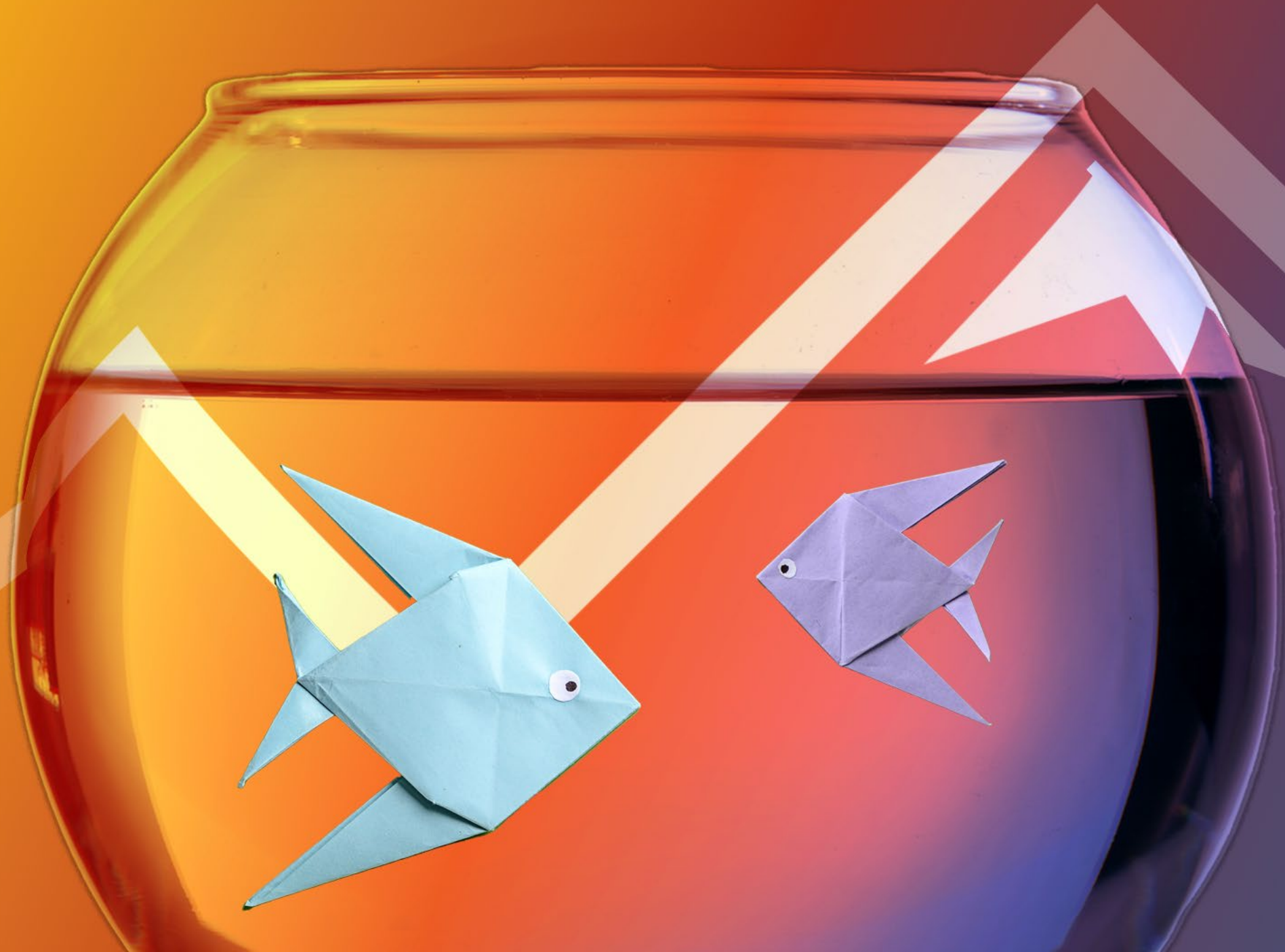


# How a Community-Based Organization Embraced Climate Work



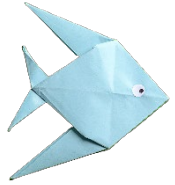
**CULTIVANDO**

Líderazgo • Abogacía • Colaboración





# About the Fishbowl



**Participants:** Groups of four will discuss and react to our questions



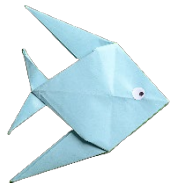
**Observers:** Those in the outer circle listen, participate by tapping shoulder of Fishbowl participant



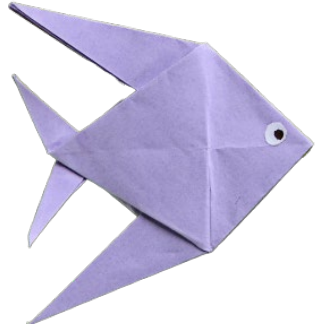
**Rotation:** Observers replace inner circle participants



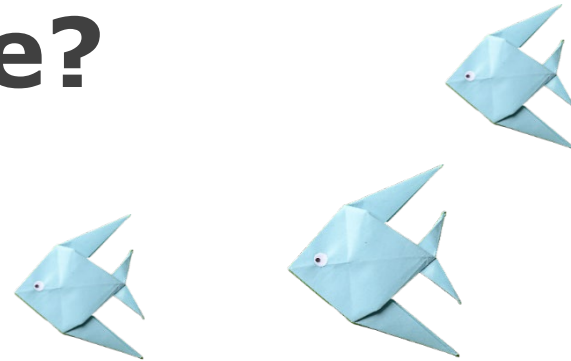
**Questions:** Feel free to ask new questions in the fishbowl



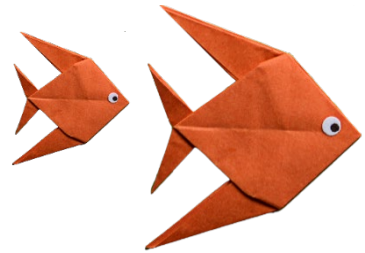
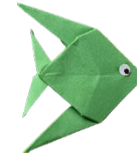
**Virtual participation:** Submit questions or comments through the chat



**Share about your  
(or your organization's)  
work. In what ways  
are you impacting the  
health and well-being  
of communities or  
those you serve?**

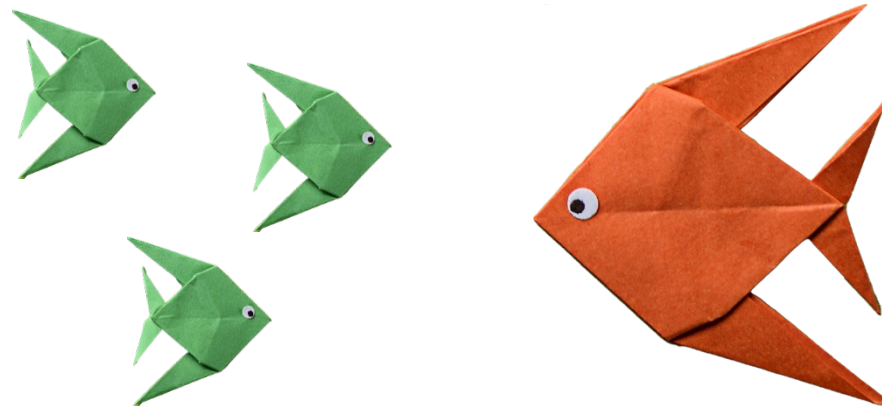


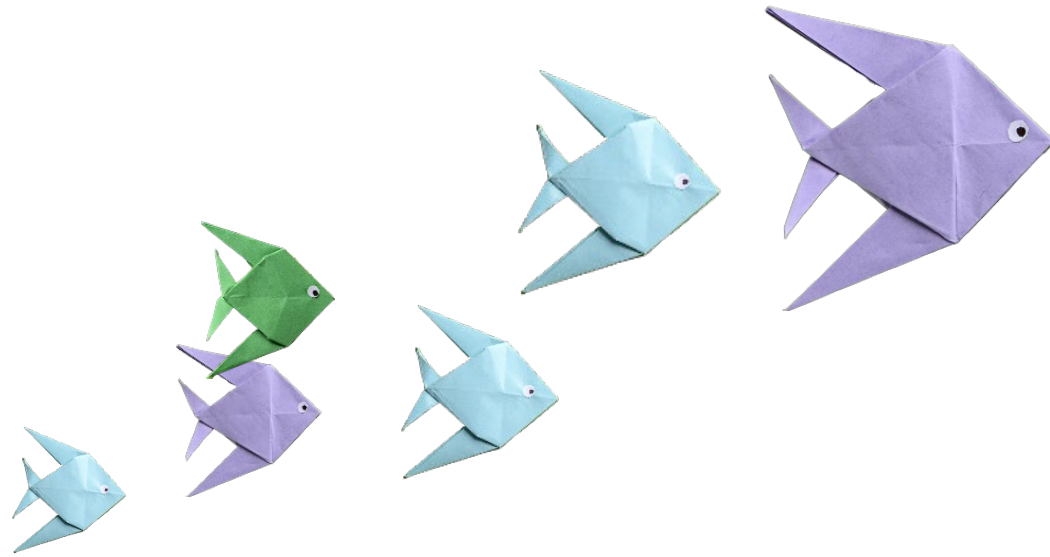
**In what ways are you  
(or your organization)  
already making  
communities  
more resilient  
to climate change?**





**What challenges or barriers  
are getting in the way  
of advancing climate  
resilience in your community?**





**What would make it easier  
to amplify climate resilience  
work in your community?**

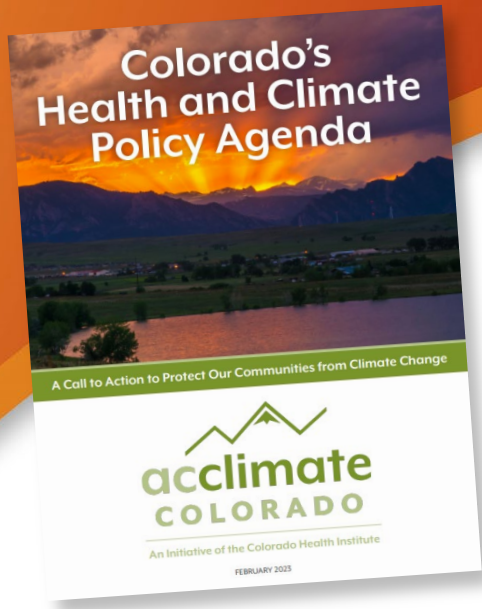


**When you leave this presentation, what are one or two things you will do to **connect the dots** to climate change in your work?**





# How to Get Involved



Read and share the policy agenda with your network and policymakers



Reach out to CHI to learn more



Become a policy strategy champion



Join the Action Team



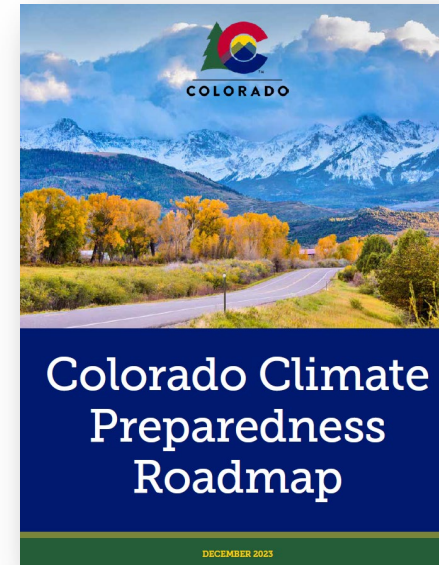
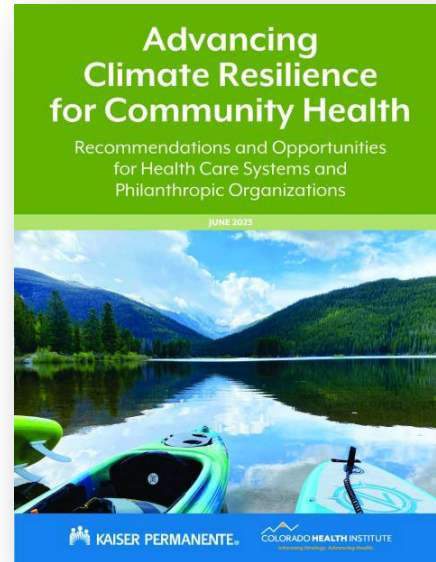
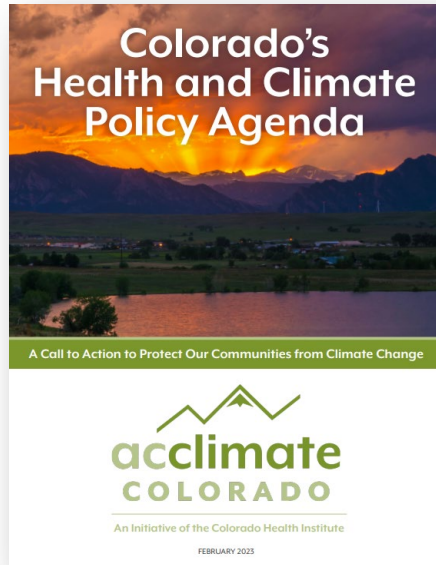
Engage and inquire with community



Support the Work

Sign up at [colo.health/climatelist](https://colo.health/climatelist) 

# News You Can Use



HOT ISSUES  
IN HEALTH  
#HIHC23

# Key Takeaways



Climate change is impacting Coloradans' health today, and they do not feel prepared



Climate resilience and social factors that influence health go hand in hand



Everyone in this room has a role to play in elevating climate resilience





**Karam Ahmad** Director  
[ahmadk@coloradohealthinstitute.org](mailto:ahmadk@coloradohealthinstitute.org)

**Emily Santich** Policy Analyst  
[santiche@coloradohealthinstitute.org](mailto:santiche@coloradohealthinstitute.org)